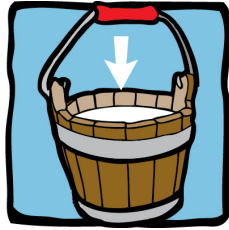


Millie's Chickens

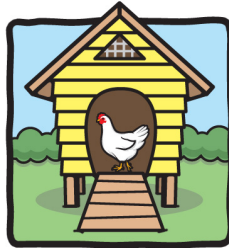
A RIF VOCABULARY SCAFFOLD



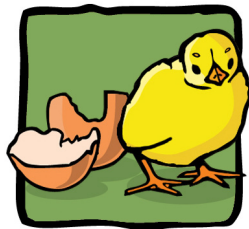
brim: the top edge of a glass or container



coop: a cage or small building where chickens are kept



hatching: when a young animal, like a chick, breaks through an egg



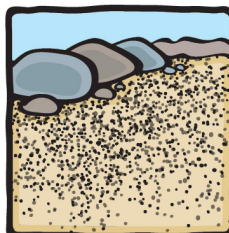
dawn: when the sun comes up; very early morning



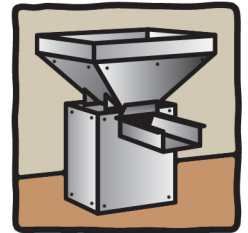
feed: food for animals



grit: very small pieces of sand or stone



hopper: a container used to pour grain into an opening so animals can eat it



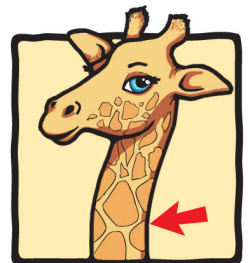
pellet: a small, hard ball of food



nest: the place where a bird lays its eggs and takes care of its young



slim: thin; skinny; small



Reading Is Fundamental