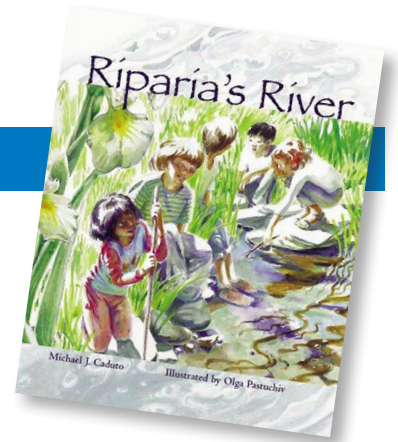


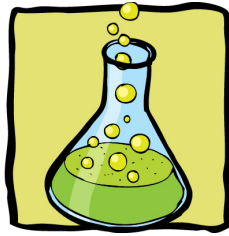
# Riparia's River

## A RIF VOCABULARY SCAFFOLD

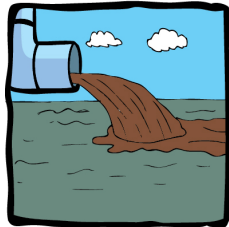


**chemicals:**

substances people use in factories or labs to make other things



**sewer:** a pipe (usually underground) where all the waste and dirty water goes



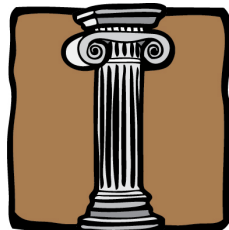
**trundle:** to walk slowly or awkwardly



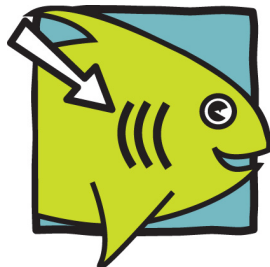
**riverbank:** the bit of land right next to a river



**ancient:** really old



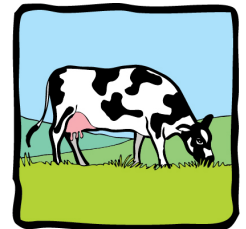
**gills:** the body part a fish uses to breathe



**cannonball:** a kind of jump you do into water to make a big splash



**to graze:** (for an animal) to eat grass or plants



**fierce:** wild, dangerous, lively



**pasture:** a field; flat land where animals like cows or horses live

